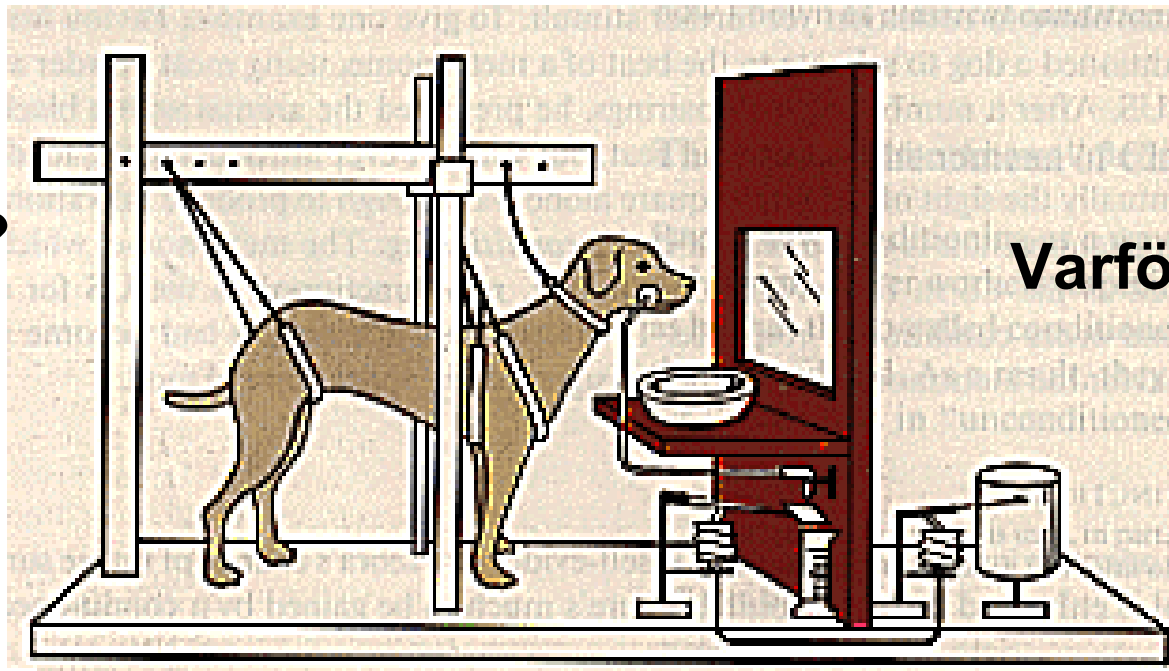


# Etologi

Hur?



Varför?

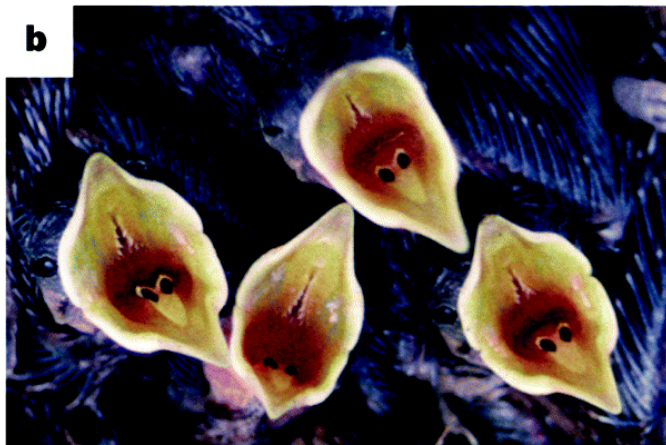
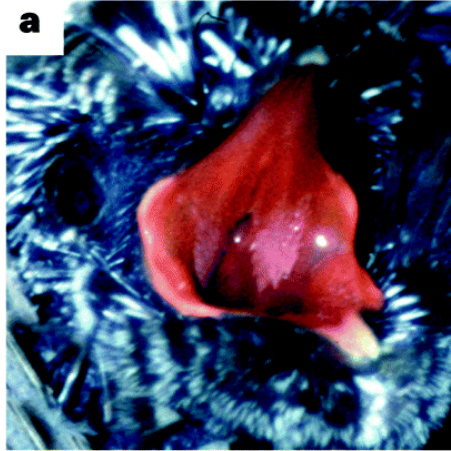
# Instinkter: medfödda beteendemönster



# Reflexer



# Fixa beteendemönster



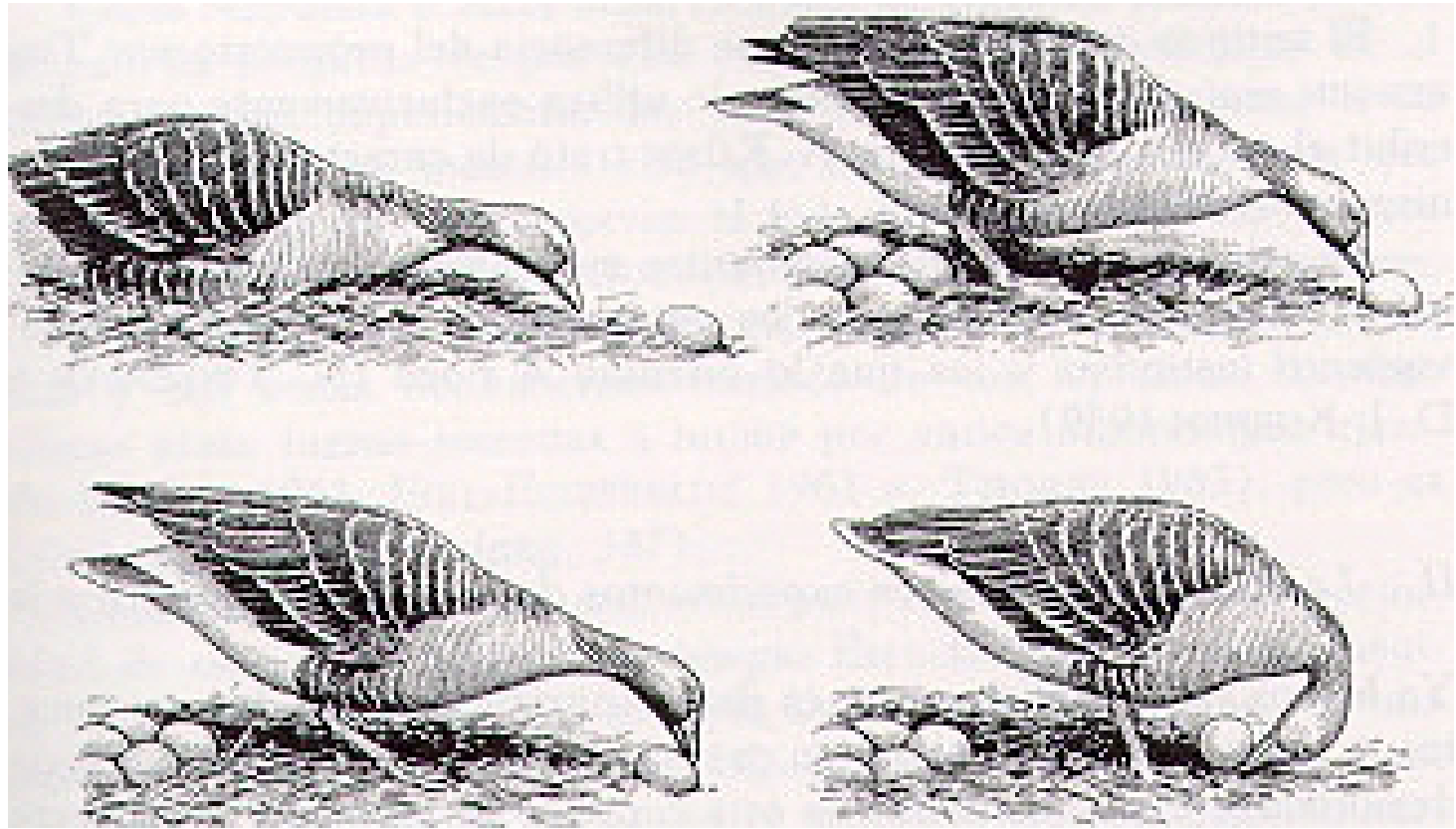
# Fixa beteendemönster



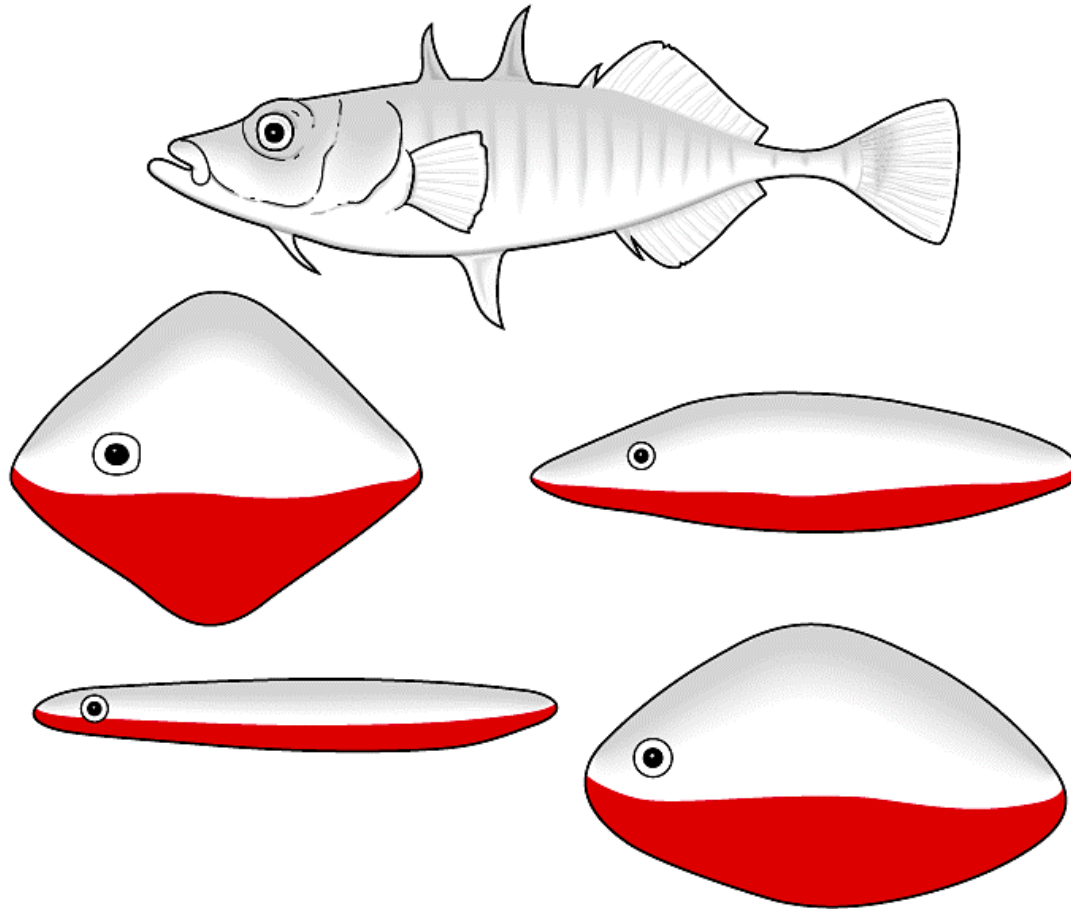
# Fixa beteendemönster



# Fixa beteendemönster



# Supernormala stimuli



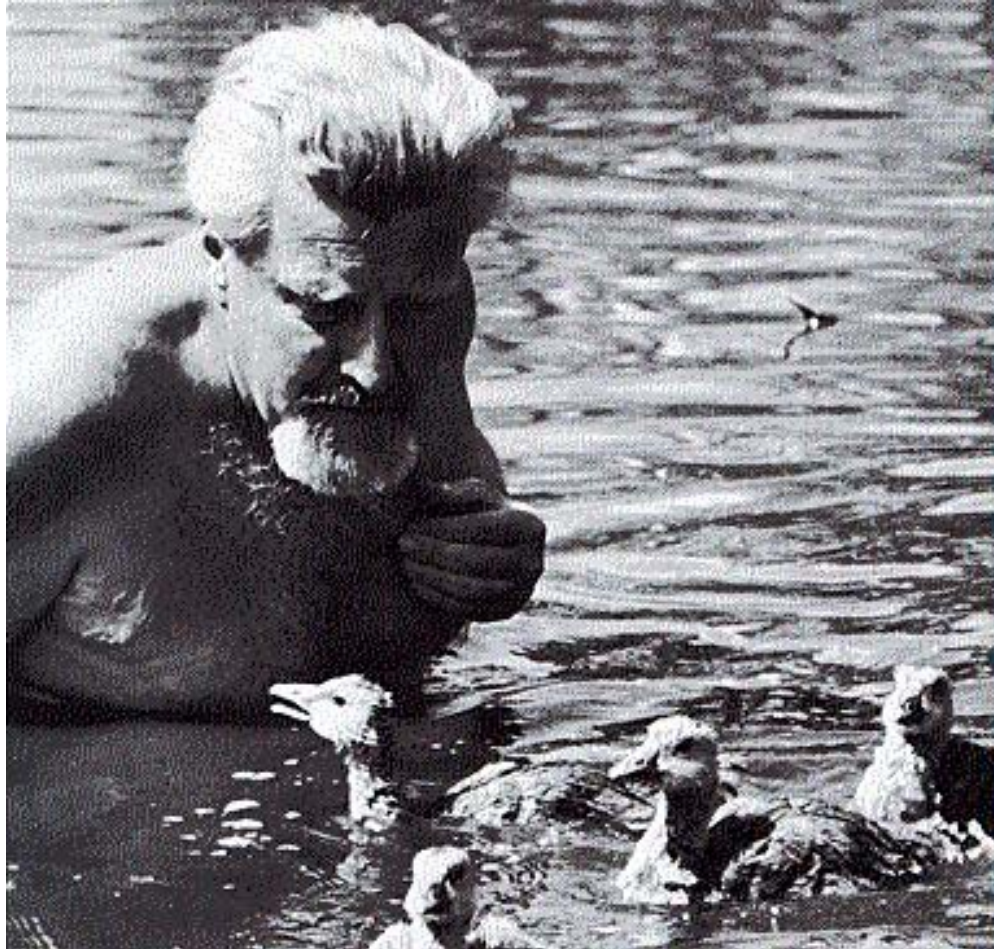
# Överflödeshandlingar



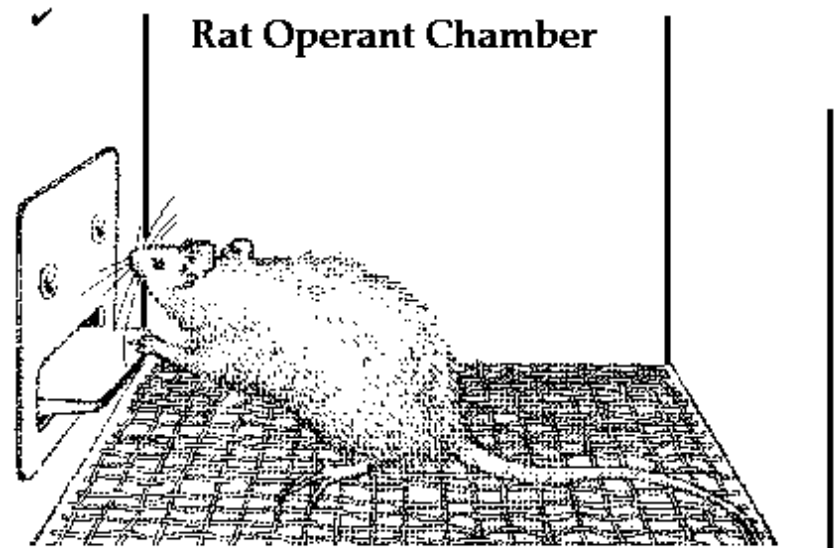
# Överslagshandlingar



# Prägling



# Associativ inlärning

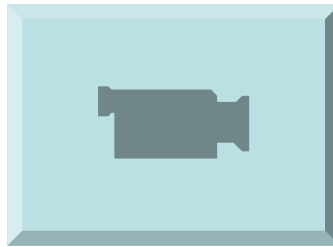


manipulandum

# Härmning



# Härmning



# Inlärning genom insikt



# Kommunikation



# Kommunikation



# Kommunikation



# Kommunikation

